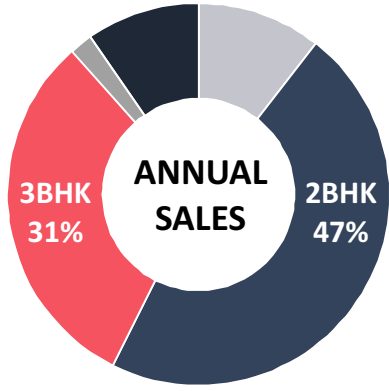
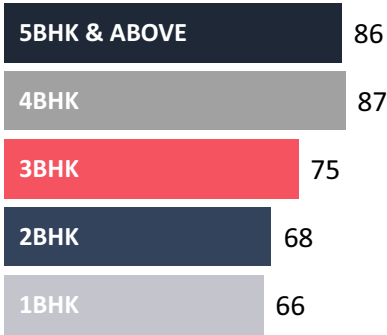


CHENNAI: Covered with cloudy skies due to increasing unsold stock

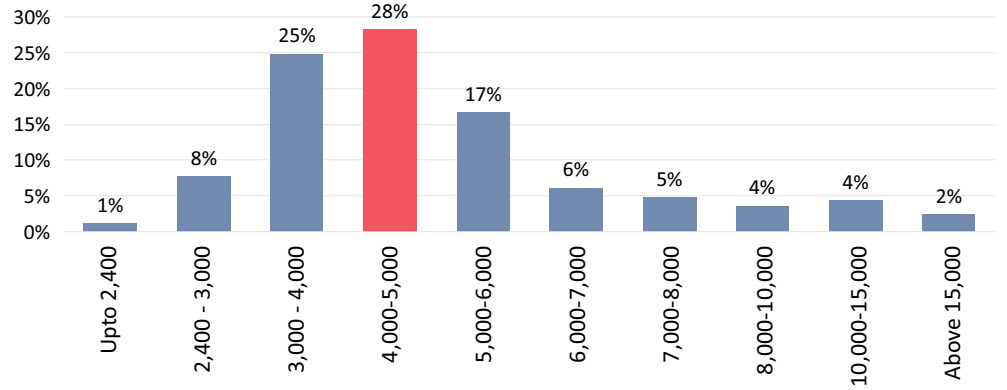
ANNUAL SALES: 14.18 million sqft ▼ 5% Decrease
MONTHS INVENTORY: 70 months ▼ 12% Increase



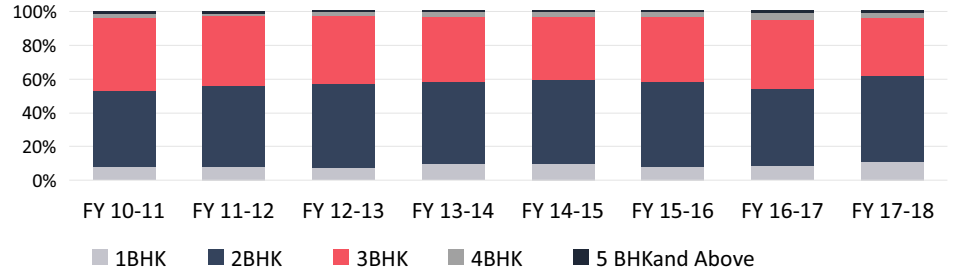
MONTHS INVENTORY



SALES AS PER PRICE BRACKET

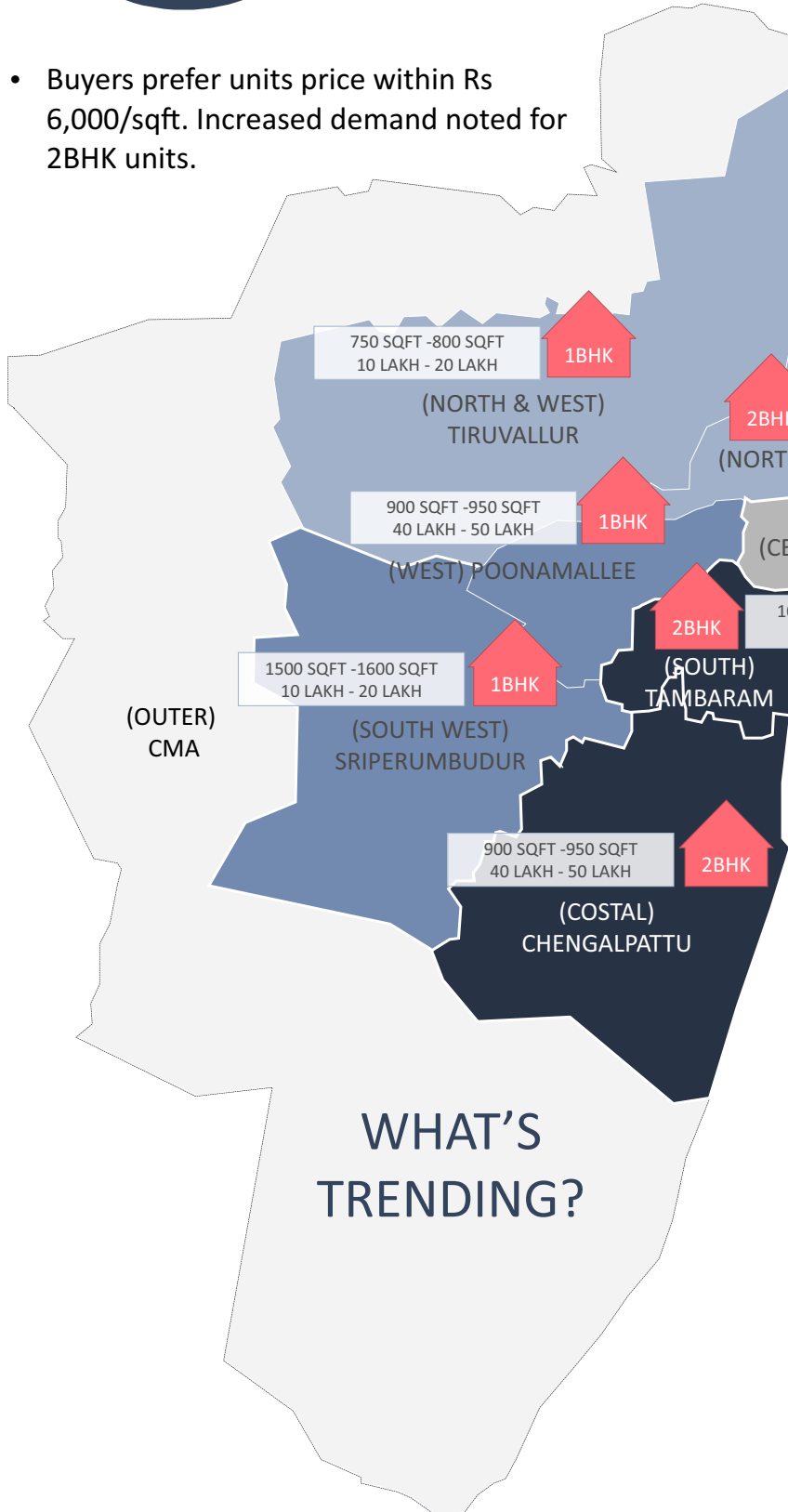


PRODUCT SHIFT (SALES)



INDICATION OF VARIATION IN PRICE OF NEW SUPPLY
▲ INCREASE ▼ DECREASE
MI: Months Inventory(months)

- Buyers prefer units price within Rs 6,000/sqft. Increased demand noted for 2BHK units.



SOUTH TAMBARAM

ANNUAL SALES: 4.09 million sqft
AVERAGE PRICE: ₹ 6,498 PSF ▲ 2% INCREASE
MI 38

COASTAL CHENGALPATTU

ANNUAL SALES: 4.05 million sqft
AVERAGE PRICE: ₹ 4,147PSF ▼ 2% DECREASE
MI 92

WEST POONAMALLEE

ANNUAL SALES: 2.05 million sqft
AVERAGE PRICE: ₹ 5,945 PSF ▲ 4% INCREASE
MI 53

NORTH AMBATTUR

ANNUAL SALES: 1.71 million sqft
AVERAGE PRICE: ₹ 6,776PSF ▼ 3% DECREASE
MI 79

SOUTH WEST SRIPERUMBUDUR

ANNUAL SALES: 0.84 million sqft
AVERAGE PRICE: ₹ 3,405 PSF ▲ 1% INCREASE
MI 88

NORTH & WEST THIRUVALLUR

ANNUAL SALES: 0.70 million sqft
AVERAGE PRICE: ₹ 3,171PSF ▲ 2% INCREASE
MI 72

KNOW YOUR SUBURB

- Kelambakkam, Perungalathur and Paranur in Chengalpattu (Coastal Suburb) contribute 8.6 % of total sales in the city (1,025 units sold).
- Adjacent location Paruthipet sold 363 units contributing 3% of the city's annual sales.

ANNUAL SALES (UNITS)

3K - 4K	(COSTAL) CHENGALPATTU, (SOUTH) TAMBARAM
2K - 3K	(WEST) POONAMALLEE, (SOUTH WEST) SRIPERUMBUDUR
1K - 2K	(NORTH) AMBATTUR, (NORTH & WEST) TIRUVALLUR
BELOW 1K	(CENTER) CHENNAI

- Graphic shows various suburbs in Chennai their best performing unit type and its specification.

WHAT'S TRENDING?